

The Medical Partner
for a Better Future
www.wbtkorea.com





We continuously develop effective products that are easy for dentists to use and comfortable for patients

World Bio Tech

- + Customer satisfaction is our top priority
- + Striving to develop advanced technology and high-quality products
- + Meet the WORLD BIO TECH that improves the quality of your life

CONTENTS

ORTHODONTIC BRACKETS & TUBES

04

SELPRO A

Self-Ligating active Ceramic Bracket

08

SELPRO P

Self-Ligating passive Ceramic Bracket

12

BIJOU & X.O

Monocrystalline Sapphire Ceramic Bracket

14

BRIGHT ADVANCE

Polycrystalline Ceramic Bracket

16

LUCID

Resin Bracket

18

DELICATE

Metal Bracket

20

Buccal Tube Weldable

21

A1

Buccal Tube Bondable

ARCH WIRES

22

SMART

Arch Wire

MULTI BUTTON

24

MULTI BUTTON

ATTACHMENTS

25

ATTACHMENTS

ELASTICS

26

ELASTIC

Intraoral

ELASTOMERICS

27

CONTROL CHAIN

STRIPS

28

OTO STRIPS

IPR System

FIX CREW™

30

FIX CREW™

Orthodontic Screw System

Certification

GMP

ISO 13485

CE

PMDA

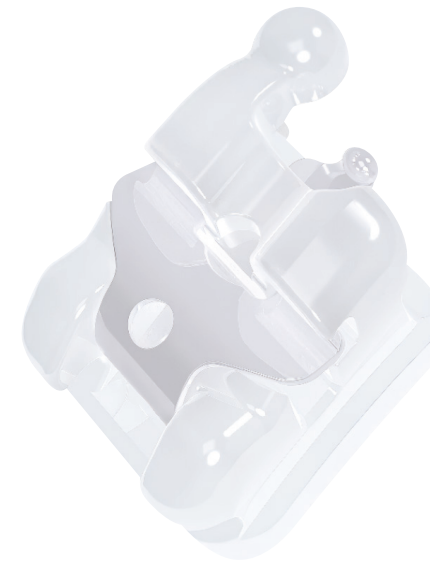
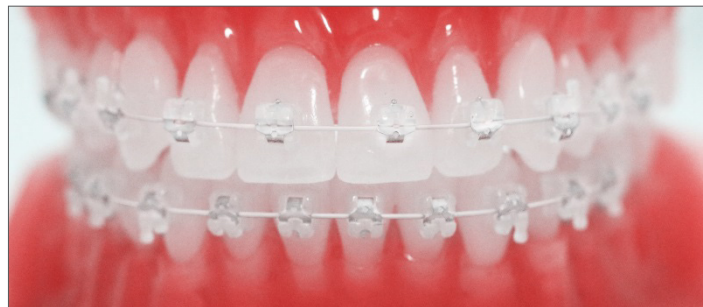
NMPA



Prof. Kee-Joon Lee
Department of Orthodontics,
Yonsei University College of Dentistry
Designed by Prof. Kee-Joon Lee
Yonsei University Dental Hospital

Precise Self Ligating Ceramic Bracket System

“Details are Important for Self-Ligating Ceramic Brackets.”



Clip Play minimization

- ▶ **Prevention of Clip Deformation and Improvement of Stiffness** by realizing precise dimension of the binding area of clip and bracket
- ▶ **Strong Clamping Force of Wire** due to narrow gap **Preventing Clip Opening Barrier**
- ▶ **Precise Clip Play** : Increased Rotation and Torque Control
Precision by reducing clip play compared to the control group
- ▶ **Precise Clip Insertion Slot** : Fracture prevention due to increased bracket wing thickness

ROTH .018 / .022

	Tooth	Torque	Ang	.018 slot	.022 slot
Maxillary	Central	12°	5°	SCAB-R18-11,21	SCAB-R22-11,21
	Lateral	8°	9°	SCAB-R18-12,22	SCAB-R22-12,22
	Cuspid with Hook	-2°	11°	SCAB-R18-13H,23H	SCAB-R22-13H,23H
	1 st Bicuspid with Hook	-7°	0°	SCAB-R18-145H,245H	SCAB-R22-145H,245H
	2 nd Bicuspid with Hook	-7°	0°	SCAB-R18-145H,245H	SCAB-R22-145H,245H
Mandibular	Anteriors	0°	0°	SCAB-R18-3412	SCAB-R22-3412
	Cuspid with Hook	-11°	7°	SCAB-R18-33H,43H	SCAB-R22-33H,43H
	1 st Bicuspid with Hook	-17°	0°	SCAB-R18-34H,44H	SCAB-R22-34H,44H
	2 nd Bicuspid with Hook	-22°	0°	SCAB-R18-35H,45H	SCAB-R22-35H,45H
Patient Kit	3X3			SCAB-R18-U3L3	SCAB-R22-U3L3
	5X5			SCAB-R18-U5L5	SCAB-R22-U5L5

MBT .022

	Tooth	Torque	Ang	.022 slot
Maxillary	Central	17°	4°	SCAB-M22-11,21
	Lateral	10°	8°	SCAB-M22-12,22
	Cuspid with Hook	0°	8°	SCAB-M22-13H, 23H
	1 st Bicuspid with Hook	-7°	0°	SCAB-M22-145H, 245H
	2 nd Bicuspid with Hook	-7°	0°	SCAB-M22-145H, 245H
Mandibular	Anteriors	-6°	0°	SCAB-M22-3412
	Cuspid with Hook	0°	3°	SCAB-M22-33H, 43H
	1 st Bicuspid with Hook	-12°	2°	SCAB-M22-34H, 44H
	2 nd Bicuspid with Hook	-17°	2°	SCAB-M22-35H, 45H
Patient Kit	3X3			SCAB-M22-U3L3
	5X5			SCAB-M22-U5L5

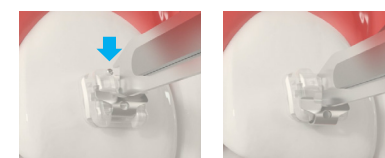
Bracket Wing Thickness Comparison



Torque Play Simulation



Open



Place the Opener tip between the Body and the Door, then apply downward force to open the door.

Close



After putting the Wire into the Slot, use a tool or your finger to push it in until fully closed.

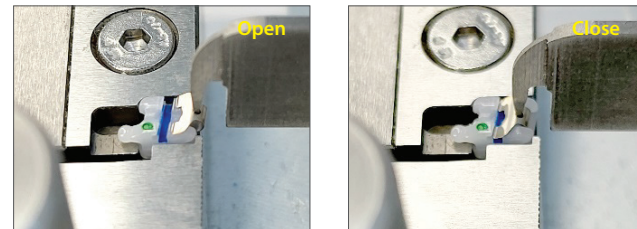
Opening Tool



P181
Clip Opener



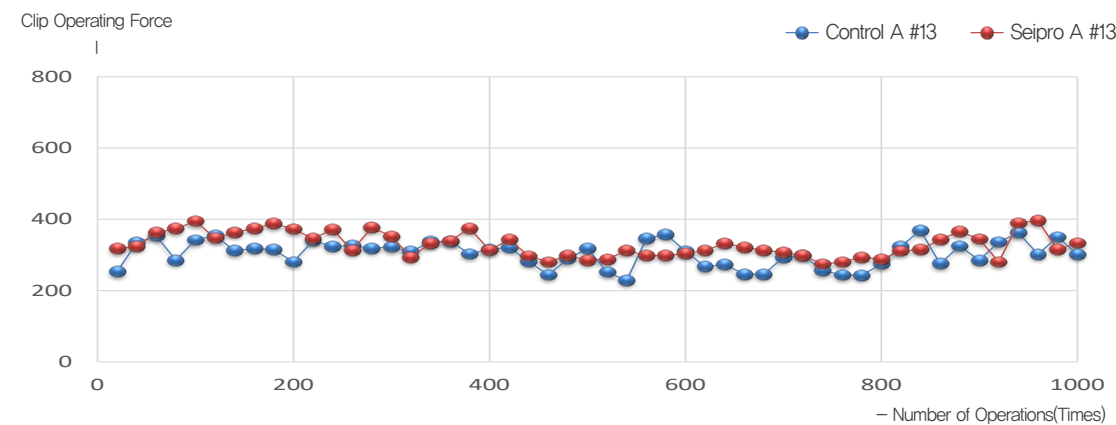
Clip Operability Test Method



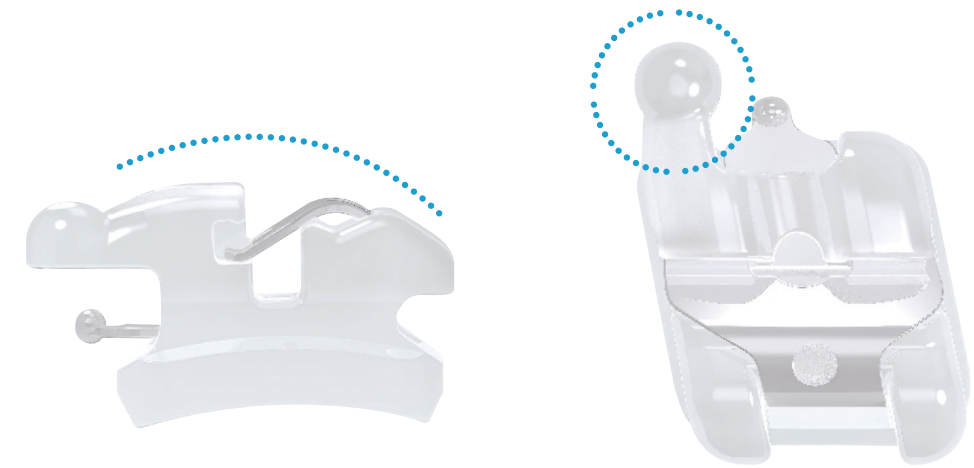
Push Pull Digital Machine

- ▶ Clip has strong binding force compared to the control group
- ▶ **Clip Retention Strength is Maintained** even with **Repeated Operation**
- ▶ **Prevent Clip Deformation** during **Open/Close Actions** in the wire replacement process
- ▶ **Improved Clip Design** ensures **Continuously Strong Retention of the Wire**

Clip Operability Test Result

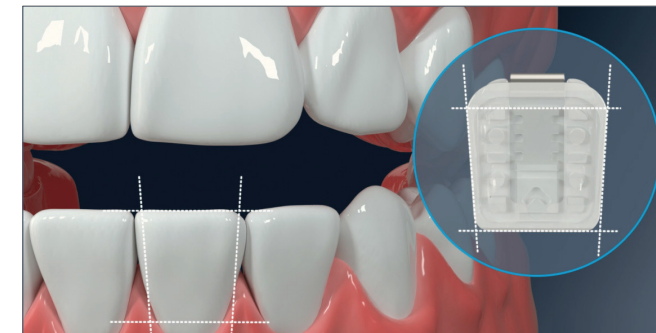


Testing Institution: KCL
(Korea Institute of Construction and Living Testing)



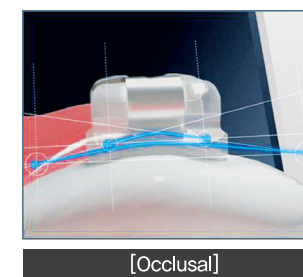
▶ Round body and Wing, and Spherical Hook

- ▶ Application of a **Spherical Hook** that **Minimizes Oral Contact Surfaces**
- ▶ Application of a **Round Design** to **Reduce Discomfort and Pain**

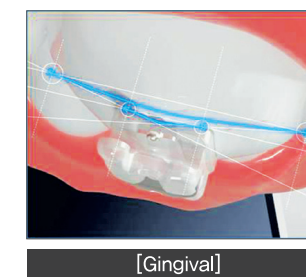


▶ Mandibular Anterior Morphology

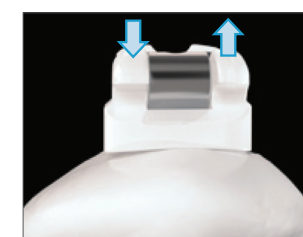
- ▶ Application of a **Rhombus-Shaped Base Design** tailored to tooth morphology
- ▶ **Prevents Interference with Adjacent Teeth** and secures **Inter Bracket Distance (IBD)**



[Occlusal]



[Gingival]



[Non curvature]



[Curvature]

▶ Global Citizen Curvature Big Data

- ▶ Application of the **Average Curvature Values** based on the **Occlusal and Gingival Reference Axes** of the Teeth

Precise Canine Curvature :

- Maximization of ease in **Controlling the Rotation of Canines and Premolars** through **Curvature Formation** tailored to the Teeth
- Improvement in **Tooth Curvature Compatibility** for **Stable Bonding and Accurate Force Transmission** in orthodontics



Prof. Kee-Joon Lee
Department of Orthodontics,
Yonsei University College of Dentistry
Designed by Prof. Kee-Joon Lee
Yonsei University Dental Hospital

Precise Self Ligating Ceramic Bracket System

“Details are Important for Self-Ligating Ceramic Brackets.”



► Super Rotation Control Moment

- 15–43% higher Rotation Control Moment compared to control group

ROTH .022

	Tooth	Torque	Ang	.022 slot
Maxillary	Central	12°	5°	SCPB-R22-11,21
	Lateral	8°	9°	SCPB-R22-12,22
	Cuspid with Hook	-2°	11°	SCPB-R22-13H,23H
	1 st Bicuspid with Hook	-7°	0°	SCPB-R22-145H,245H
	2 nd Bicuspid with Hook	-7°	0°	SCPB-R22-145H,245H
Mandibular	Anteriors	0°	0°	SCPB-R22-3412
	Cuspid with Hook	-11°	7°	SCPB-R22-33H,43H
	1 st Bicuspid with Hook	-17°	0°	SCPB-R22-344H
	2 nd Bicuspid with Hook	-22°	0°	SCPB-R22-345H
Patient Kit	3X3			SCPB-R22-U3L3
	5X5			SCPB-R22-U5L5

MBT .022

	Tooth	Torque	Ang	.022 slot
Maxillary	Central	17°	4°	SCPB-M22-11,21
	Lateral	10°	8°	SCPB-M22-12,22
	Cuspid with Hook	0°	8°	SCPB-M22-13H,23H
	1 st Bicuspid with Hook	-7°	0°	SCPB-M22-145H, 245H
	2 nd Bicuspid with Hook	-7°	0°	SCPB-M22-145H, 245H
Mandibular	Anteriors	-6°	0°	SCPB-M22-3412
	Cuspid with Hook	0°	3°	SCPB-M22-33H,43H
	1 st Bicuspid with Hook	-12°	2°	SCPB-M22-34H,44H
	2 nd Bicuspid with Hook	-17°	2°	SCPB-M22-35H,45H
Patient Kit	3X3			SCPB-M22-U3L3
	5X5			SCPB-M22-U5L5

Passive Self-Ligating Ceramic Bracket



► Minimum Rotation Loss Angle

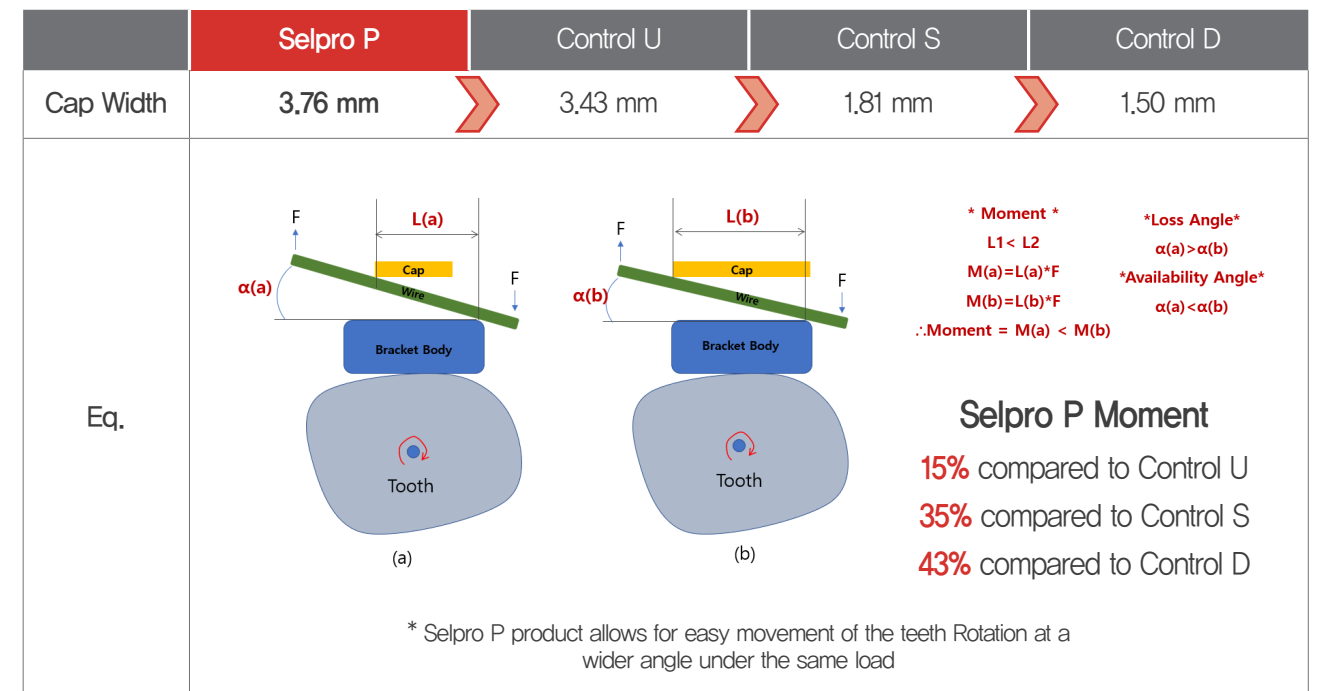
- Minimizing Wire Inclination Angle (loss angle) by Maximizing the Width of the Ceramic Cap
- An Increase in Available Angle due to the reduction of the wire's loss angle

► Application of a Stable Cap Structure through CAE Structural Analysis

- Improvement of Cap detachment strength by Applying a PPC Structure that Enhances the Wire's Load Resistance

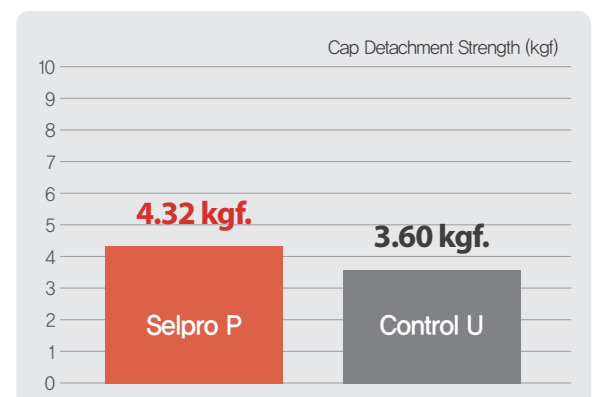
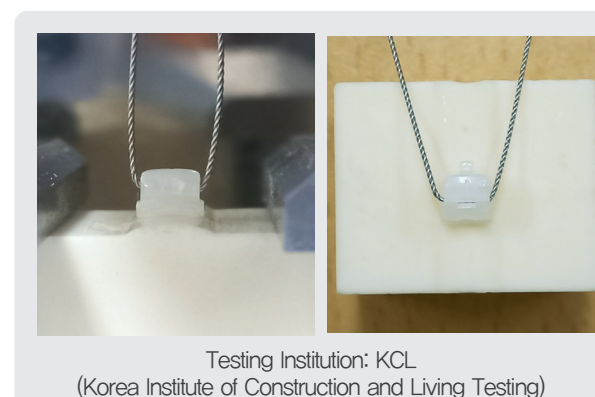
► Application of UBH/DBH Structure with Implemented Tactile Feedback

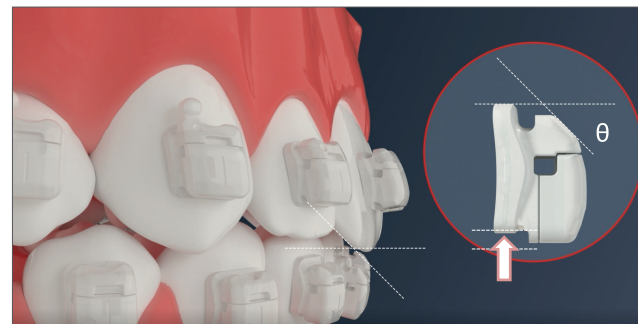
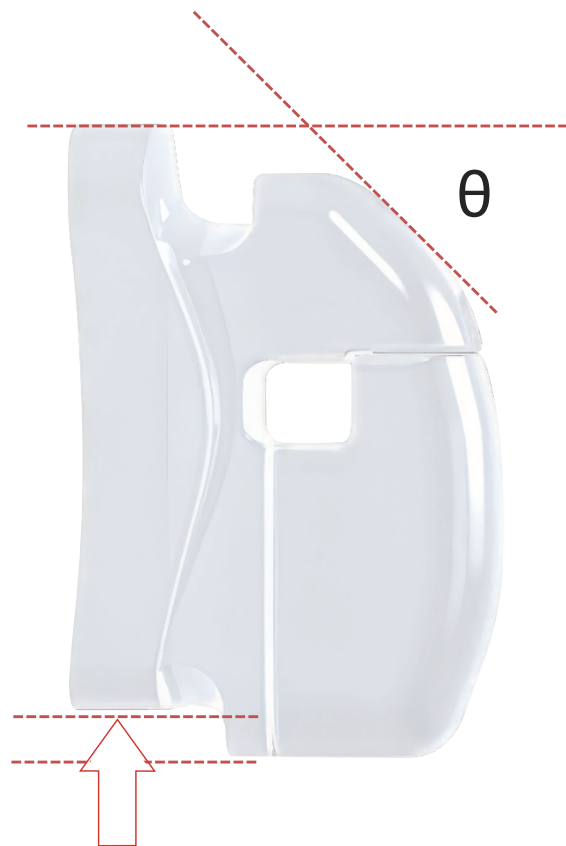
- Improvement of Open/Close Operating Feel through the Application of a Patented UBH/DBH Structure



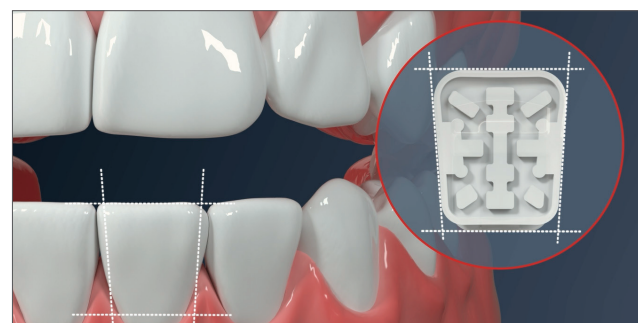
Method for measuring the detachment strength

Results of the detachment strength measurement





- ▶ **Safe Overbite – Overjet Structure**
 - ▶ Minimized Interference of Maxillary Anterior Teeth with the Inclined Structure of the Mandibular Bracket Body Wing
 - ▶ Base Design for the Convenience of Mandibular Bracket Positioning



- ▶ **Mandibular Anterior Morphology**
 - ▶ Application of a Rhombus-Shaped Base Design tailored to tooth morphology
 - ▶ Prevention of Adjacent Tooth Interference and Securing of Inter-Bracket Distance (IBD)

Open



Position the Opener Tip between the Body and the Door, then rotate it about 40° to open the door.

Close



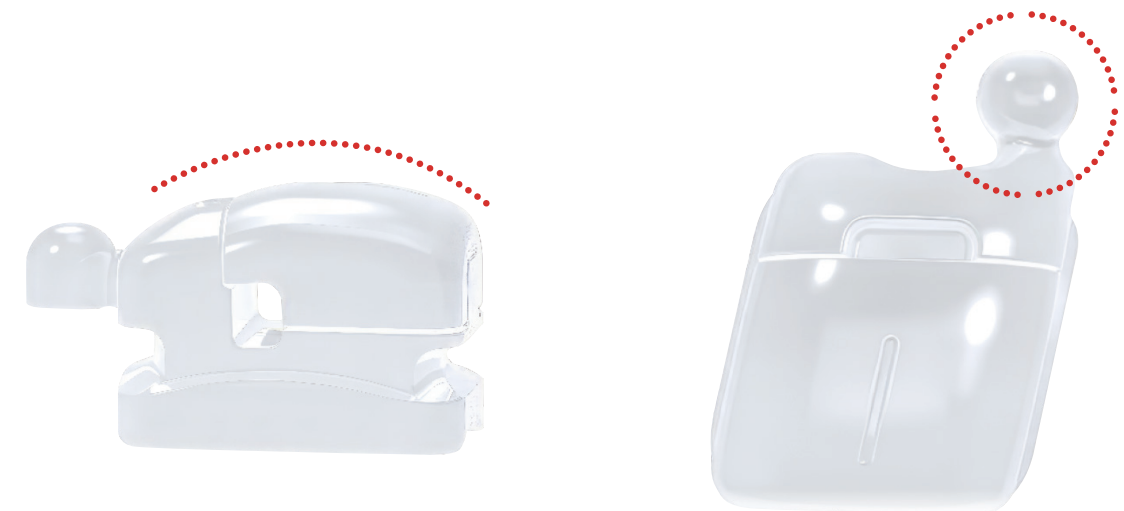
Press the Wire against the Slot, and then use a tool or your finger to push until you hear a "click" sound, confirming it is closed completely.

Opening & Closing Tool

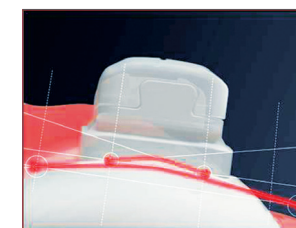


P182
Opening Tool

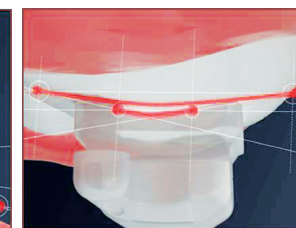
P183
Closing Tool



- ▶ **Comfortable Spherical Hook**
 - ▶ Use of a Spherical Hook that Minimizes Intraoral Contact Surfaces
 - ▶ Glass Surface Treatment to Reduce Foreign Body Sensation Pain



[Occlusal]



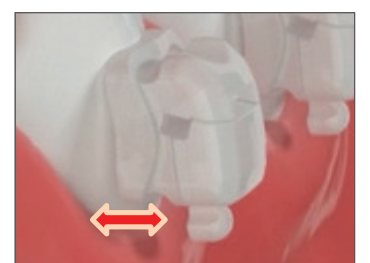
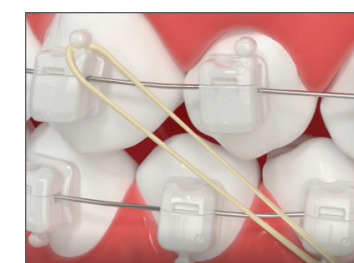
[Gingival]



[Non curvature]



[Curvature]



- ▶ **Global Citizen Curvature Big Data**
 - ▶ Generation of Global Citizen Big Data
 - ▶ Application of Average Curvature Values based on the Occlusal and Gingival Reference Axes of the Teeth
- Precise Canine Curvature : Maximizing Convenience for adjusting the Rotation of Canines and Premolars through Curvature Formation tailored to the Teeth

- ▶ **Tie Groove Structure Through Simulation Analysis**
 - ▶ Improved functionality for Ligation of Elastics
- ▶ **Mandibular Central Inclined Hook Structure**
 - ▶ Inclination applied to Minimize Interference with the Gingival
 - ▶ Central Hook Positioning on the Mandibular Premolars to Reduce Foreign Body Sensation and Pain

Considerations When Using Selpro P

Position of the Slot

Carefully observe the position of the slot before attachment as it is slightly inclined to the top of the bracket body.

Arch Wire Sequence

Adequate torque adjustment and rotation adjustment will facilitate easy insertion of full-size wires.

Door Opening

Adequate torque adjustment and rotation adjustment will facilitate easy insertion of full-size wires.

Door Closing

Before closing, ensure that the wire is adequately pressed against the slot; especially when using a rectangular wire, it is recommended to use a dedicated tool.

The door opens automatically

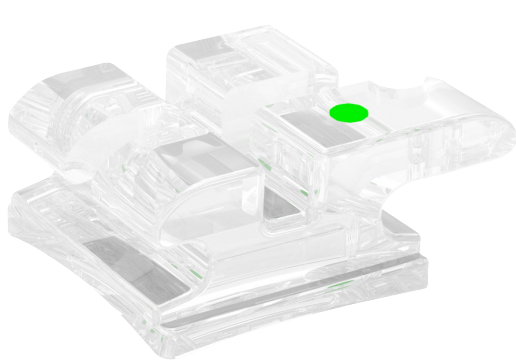
If the door is closed while the wire is not sufficiently pressed against the slot, it may lead to breakage as the door could open. Always confirm the "click" sound when closing the door.

The door does not close completely

If the door does not close, revert to the previous wire stage or ligate the affected tooth with an O-ring, and it can be checked at the next visit.

Breakage of the door or wing

Be cautious to avoid breakage of the door or wing in the mandibular anterior region due to premature contact with the maxillary.



Bijou

- ▶ Design with Rounding to Minimize Patient Discomfort
- ▶ Coating applied to only 70% of the Base area to safely Protect the Dental Enamel during Bonding and Debonding
- ▶ Excellent aesthetics with Mono-Crystalline Sapphire Brackets
- ▶ Plasma Silica Coating applied to the Entire Slot and Body for Optimal Sliding and Strong Resistance to Breakage

X.O(Extra Order)

- ▶ Non-Extraction Specific Low Torque Bracket
- ▶ Designed with Low Torque and Angulation values suitable for Non-Extraction Orthodontics



Bijou

ROTH .018 / .022

	Tooth	Torque	Ang	.018 slot	.022 slot
Maxillary	Central	12°	5°	BJB-R18-11,21	BJB-R22-11,21
	Lateral	8°	9°	BJB-R18-12,22	BJB-R22-12,22
	Cuspid with Hook	-2°	11°	BJB-R18-13H,23H	BJB-R22-13H,23H
	1 st Bicuspid with Hook	-7°	0°	BJB-R18-14H,24H	BJB-R22-14H,24H
	1 st Bicuspid without Hook	-7°	0°	BJB-R18-14,24	BJB-R22-14,24
	2 nd Bicuspid with Hook	-7°	0°	BJB-R18-15H,25H	BJB-R22-15H,25H
Mandibular	2 nd Bicuspid without Hook	-7°	0°	BJB-R18-15,25	BJB-R22-15,25
	Anteriors	0°	0°	BJB-R18-3412	BJB-R22-3412
	Cuspid with Hook	-11°	7°	BJB-R18-33H,43H	BJB-R22-33H,43H
	1 st Bicuspid with Hook	-17°	0°	BJB-R18-34H,44H	BJB-R22-34H,44H
	1 st Bicuspid without Hook	-17°	0°	BJB-R18-34,44	BJB-R22-34,44
	2 nd Bicuspid with Hook	-22°	0°	BJB-R18-35H,45H	BJB-R22-35H,45H
Patient Kit	2 nd Bicuspid without Hook	-22°	0°	BJB-R18-35,45	BJB-R22-35,45
	3X3			BJB-R18-300	BJB-R22-300
	5X5			BJB-R18-500(H)	BJB-R22-500(H)

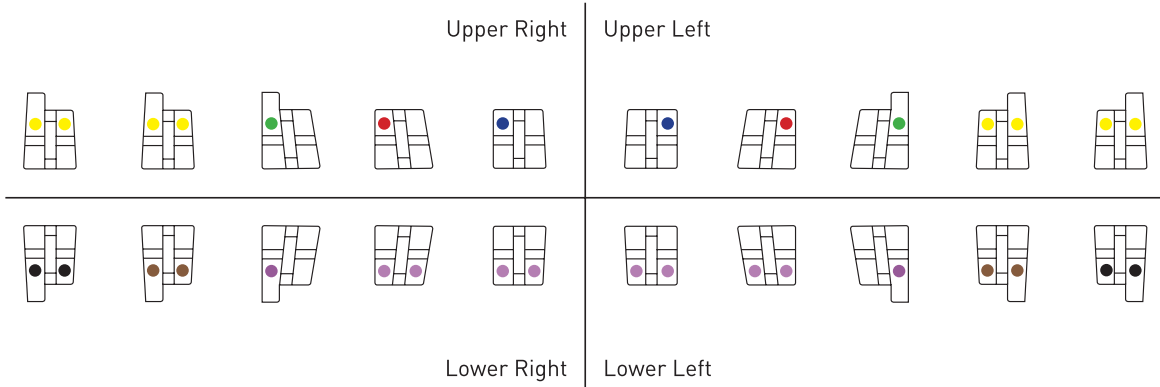
MBT .018 / .022

	Tooth	Torque	Ang	.018 slot	.022 slot
Maxillary	Central	17°	4°	BJB-M18-11,21	BJB-M22-11,21
	Lateral	10°	8°	BJB-M18-12,22	BJB-M22-12,22
	Cuspid with Hook	0°	8°	BJB-M18-13H,23H	BJB-M22-13H,23H
	1 st Bicuspid with Hook	-7°	0°	BJB-M18-14H,24H	BJB-M22-14H,24H
	1 st Bicuspid without Hook	-7°	0°	BJB-M18-14,24	BJB-M22-14,24
	2 nd Bicuspid with Hook	-7°	0°	BJB-M18-15H,25H	BJB-M22-15H,25H
Mandibular	2 nd Bicuspid without Hook	-7°	0°	BJB-M18-15,25	BJB-M22-15,25
	Anteriors	-6°	0°	BJB-M18-3412	BJB-M22-3412
	Cuspid with Hook	0°	3°	BJB-M18-33H,43H	BJB-M22-33H,43H
	1 st Bicuspid with Hook	-12°	2°	BJB-M18-34H,44H	BJB-M22-34H,44H
	1 st Bicuspid without Hook	-12°	2°	BJB-M18-34,44	BJB-M22-34,44
	2 nd Bicuspid with Hook	-17°	2°	BJB-M18-35H,45H	BJB-M22-35H,45H
Patient Kit	2 nd Bicuspid without Hook	-17°	2°	BJB-M18-35,45	BJB-M22-35,45
	3X3			BJB-M18-300	BJB-M22-300
	5X5			BJB-M18-500(H)	BJB-M22-500(H)

X.O

X.O .018 / .022

	Tooth	Torque	Ang	.018 slot	.022 slot
Maxillary	Central	7°	5°	BJB-XO18-11,21	BJB-XO22-11,21
	Lateral	3°	8°	BJB-XO18-12,22	BJB-XO22-12,22
	Cuspid with Hook	-3°	5°	BJB-XO18-13H,23H	BJB-XO22-13H,23H
	1 st Bicuspid without Hook	-7°	0°	BJB-XO18-14,24	BJB-XO22-14,24
	2 nd Bicuspid without Hook	-7°	0°	BJB-XO18-15,25	BJB-XO22-15,25
Mandibular	Anteriors	-6°	0°	BJB-XO18-3412	BJB-XO22-3412
	Cuspid with Hook	-3°	3°	BJB-XO18-33H,43H	BJB-XO22-33H,43H
	1 st Bicuspid without Hook	-12°	0°	BJB-XO18-34,44	BJB-XO22-34,44
	2 nd Bicuspid without Hook	-17°	0°	BJB-XO18-35,45	BJB-XO22-35,45
Patient Kit	3X3			BJB-XO18-300	BJB-XO22-300
	5X5			BJB-XO18-500	BJB-XO22-500



- ▶ **Mini Size & Low Profile**
- ▶ **Easy Lock Base Protects Dental Enamel** safely during Bonding and Debonding
- ▶ **Excellent Aesthetics** due to the use of **Translucent Materials**, with **No Metal Slot** to maximize aesthetics
- ▶ **Enhanced Durability Improves the Breakage** associated with Ceramics

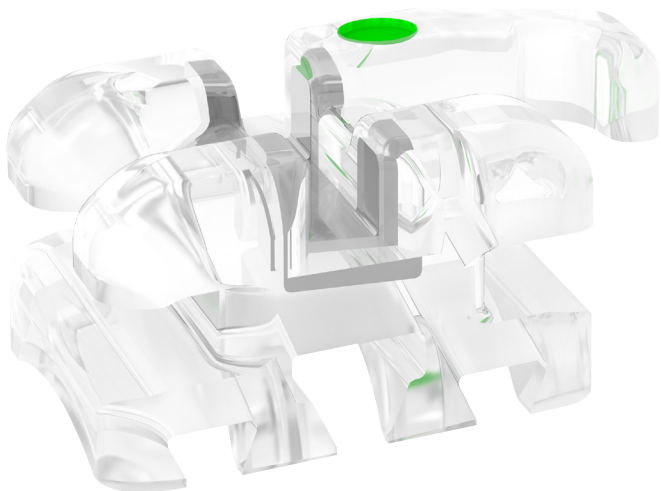


ROTH .018 / .022

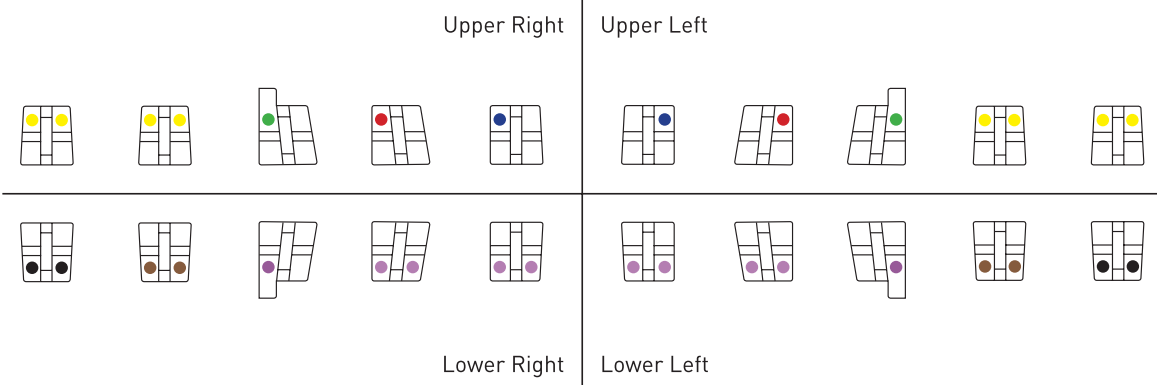
	Tooth	Torque	Ang	.018 slot	.022 slot
Maxillary	Central	12°	5°	B1-R18-11,21	B1-R22-11,21
	Lateral	8°	9°	B1-R18-12,22	B1-R22-12,22
	Cuspid with Hook	-2°	11°	B1-R18-13H,23H	B1-R22-13H,23H
	1 st Bicuspid with Hook	-7°	0°	B1-R18-14H,24H	B1-R22-14H,24H
	2 nd Bicuspid with Hook	-7°	0°	B1-R18-15H,25H	B1-R22-15H,25H
Mandibular	Anteriors	-1°	0°	B1-R18-3412	B1-R22-3412
	Cuspid with Hook	-11°	7°	B1-R18-33H,43H	B1-R22-33H,43H
	1 st Bicuspid with Hook	-17°	0°	B1-R18-34H,44H	B1-R22-34H,44H
	2 nd Bicuspid with Hook	-22°	0°	B1-R18-35H,45H	B1-R22-35H,45H
Patient Kit	3X3			B1-R18-300	B1-R22-300
	5X5			B1-R18-500(H)	B1-R22-500(H)

MBT .022

	Tooth	Torque	Ang	.022 slot
Maxillary	Central	17°	4°	B1-M22-11,21
	Lateral	10°	8°	B1-M22-12,22
	Cuspid with Hook	0°	8°	B1-M22-13H,23H
	1 st Bicuspid with Hook	-7°	0°	B1-M22-14H,24H
	2 nd Bicuspid with Hook	-7°	0°	B1-M22-15H,25H
Mandibular	Anteriors	-6°	0°	B1-M22-3412
	Cuspid with Hook	0°	3°	B1-M22-33H,43H
	1 st Bicuspid with Hook	-12°	2°	B1-M22-34H,44H
	2 nd Bicuspid with Hook	-17°	2°	B1-M22-35H,45H
Patient Kit	3X3			B1-M22-300
	5X5			B1-M22-500(H)



- ▶ “Mushroom” Shaped Mechanical Base for Strong Bonding
- ▶ Bracket Base designed to Fit the Surface of each Tooth
- ▶ Round Wing Design minimizes foreign body sensation
- ▶ Made from Medical–Grade Materials that are resistant to discoloration and wear
- ▶ Rounding at the end of the Slot Reduces Wire Binding Issues

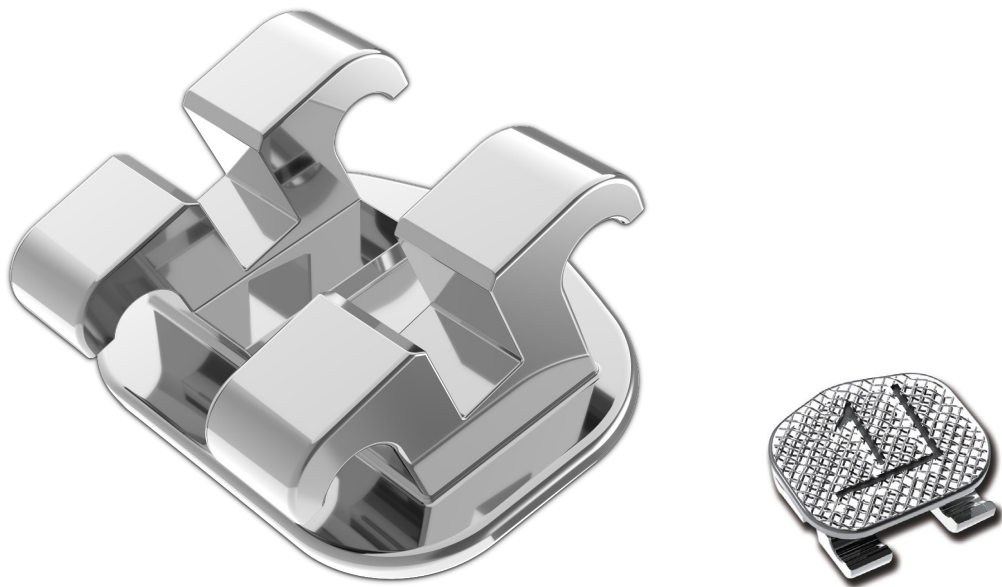


ROTH .018 / .022

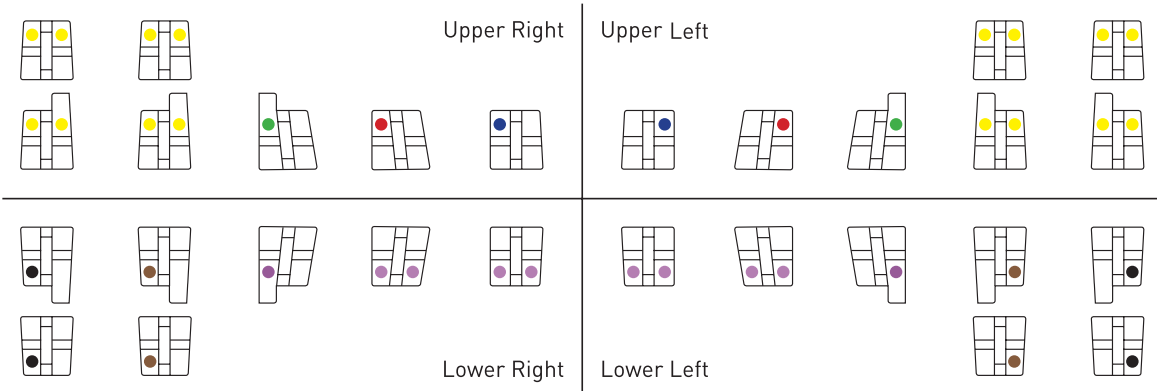
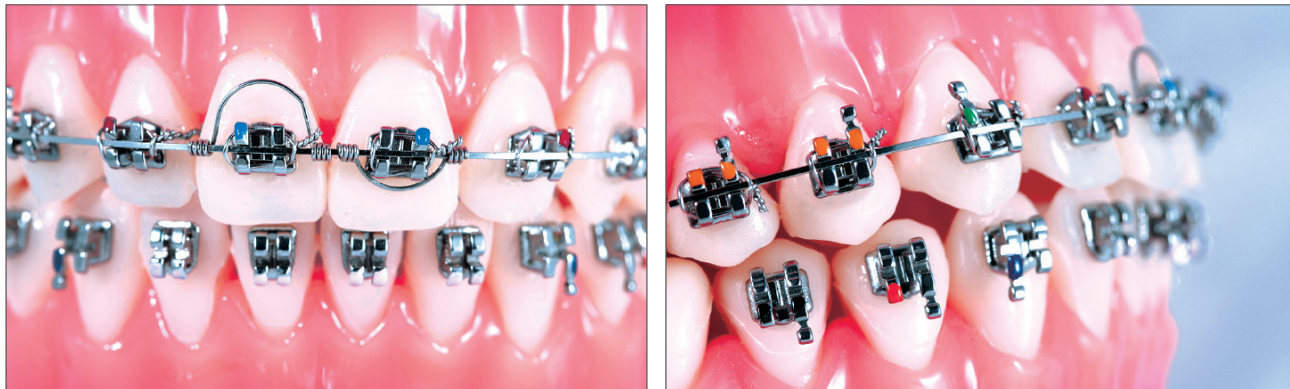
	Tooth	Torque	Ang	.018 slot	.022 slot
Maxillary	Central	12°	5°	R-R18-11,21	R-R22-11,21
	Lateral	8°	9°	R-R18-12,22	R-R22-12,22
	Cuspid with Hook	-2°	11°	R-R18-13H,23H	R-R22-13H,23H
	1 st Bicuspid without Hook	-7°	0°	R-R18-14,24	R-R22-14,24
	2 nd Bicuspid without Hook	-7°	0°	R-R18-15,25	R-R22-15,25
Mandibular	Anteriors	0°	0°	R-R18-3412	R-R22-3412
	Cuspid with Hook	-11°	7°	R-R18-33H,43H	R-R22-33H,43H
	1 st Bicuspid without Hook	-17°	0°	R-R18-344	R-R22-344
	2 nd Bicuspid without Hook	-22°	0°	R-R18-345	R-R22-345
Patient Kit	3X3			R-R18-300	R-R22-300
	5X5			R-R18-500(H)	R-R22-500(H)

MBT .022

	Tooth	Torque	Ang	.022 slot
Maxillary	Central	17°	4°	R-M22-11,21
	Lateral	10°	8°	R-M22-12,22
	Cuspid with Hook	0°	8°	R-M22-13H,23H
	1 st Bicuspid without Hook	-7°	0°	R-M22-14,24
	2 nd Bicuspid without Hook	-7°	0°	R-M22-15,25
Mandibular	Anteriors	-6°	0°	R-M22-3412
	Cuspid with Hook	0°	3°	R-M22-33H,43H
	1 st Bicuspid without Hook	-12°	2°	R-M22-34,44
	2 nd Bicuspid without Hook	-17°	2°	R-M22-35,45
Patient Kit	3X3			R-M22-300
	5X5			R-M22-500(H)



- ▶ Round Wing Design to Minimize Foreign Body Sensation
- ▶ Mini Size with a Low Profile
- ▶ Excellent Accuracy of the Slot due to CNC machining
- ▶ Easy identification of areas with Laser Marking on the Base



ROTH .018 / .022

	Tooth	Torque	Ang	.018 slot	.022 slot
Maxillary	Central	12°	5°	M-R18-11,21	M-R22-11,21
	Lateral	8°	9°	M-R18-12,22	M-R22-12,22
	Cuspid with Hook	-2°	11°	M-R18-13H,23H	M-R22-13H,23H
	1 st Bicuspid with Hook	-7°	0°	M-R18-14H,24H	M-R22-14H,24H
	1 st Bicuspid without Hook	-7°	0°	M-R18-14,24	M-R22-14,24
	2 nd Bicuspid with Hook	-7°	0°	M-R18-15H,25H	M-R22-15H,25H
	2 nd Bicuspid without Hook	-7°	0°	M-R18-15,25	M-R22-15,25
Mandibular	Anteriors	-1°	0°	M-R18-3412	M-R22-3412
	Cuspid with Hook	-11°	5°	M-R18-33H,43H	M-R22-33H,43H
	1 st Bicuspid with Hook	-17°	0°	M-R18-34H,44H	M-R22-34H,44H
	1 st Bicuspid without Hook	-17°	0°	M-R18-34,44	M-R22-34,44
	2 nd Bicuspid with Hook	-22°	0°	M-R18-35H,45H	M-R22-35H,45H
	2 nd Bicuspid without Hook	-22°	0°	M-R18-35,45	M-R22-35,45
Patient Kit	3X3			M-R18-300	M-R22-300
	5X5			M-R18-500(H)	M-R22-500(H)

MBT .018 / .022

	Tooth	Torque	Ang	.018 slot	.022 slot
Maxillary	Central	17°	4°	M-M18-11,21	M-M22-11,21
	Lateral	10°	8°	M-M18-12,22	M-M22-12,22
	Cuspid with Hook	0°	8°	M-M18-13H,23H	M-M22-13H,23H
	1 st Bicuspid with Hook	-7°	0°	M-M18-14H,24H	M-M22-14H,24H
	1 st Bicuspid without Hook	-7°	0°	M-M18-14,24	M-M22-14,24
	2 nd Bicuspid with Hook	-7°	0°	M-M18-15H,25H	M-M22-15H,25H
	2 nd Bicuspid without Hook	-7°	0°	M-M18-15,25	M-M22-15,25
Mandibular	Anteriors	-6°	0°	M-M18-3412	M-M18-3412
	Cuspid with Hook	0°	3°	M-M18-33H,43H	M-M22-33H,43H
	1 st Bicuspid with Hook	-12°	2°	M-M18-34H,44H	M-M22-34H,44H
	1 st Bicuspid without Hook	-12°	2°	M-M18-34,44	M-M22-34,44
	2 nd Bicuspid with Hook	-17°	2°	M-M18-35H,45H	M-M22-35H,45H
	2 nd Bicuspid without Hook	-17°	2°	M-M18-35,45	M-M22-35,45
Patient Kit	3X3			M-M18-300	M-M22-300
	5X5			M-M18-500(H)	M-M22-500(H)

BUCCAL TUBE

Weldable



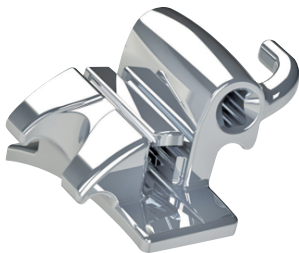
Single #6 #7

ROTH .018 / .022

	Tooth	Torque	Offset	.018 slot	.022 slot
Maxillary	1 st Molars	-14°	10°	R18WS-16,26	R22WS-16,26
	2 nd Molars	-14°	10°	R18WS-17,27	R22WS-17,27
Mandibular	1 st Molars	-25°	4°	R18WS-36,46	R22WS-36,46
	2 nd Molars	-25°	4°	R18WS-37,47	R22WS-37,47

MBT .022

	Tooth	Torque	Offset	.022 slot
Maxillary	1 st Molars	-14°	10°	M22WS-16,26
	2 nd Molars	-14°	10°	M22WS-17,27
Mandibular	1 st Molars	-20°	0°	M22WS-36,46
	2 nd Molars	-20°	0°	M22WS-37,47



Twin

ROTH .018 / .022

	Tooth	Torque	Offset	.018 slot	.022 slot
Maxillary	1 st Molars	-14°	10°	R18WTW-16,26	R22WTW-16,26
Mandibular	1 st Molars	-25°	4°	R18WTW-36,46	R22WTW-36,46

MBT .022

	Tooth	Torque	Offset	.022 slot
Maxillary	1 st Molars	-14°	10°	M22WTW-16,26
Mandibular	1 st Molars	-20°	0°	M22WTW-36,46



Triple

ROTH .018 / .022

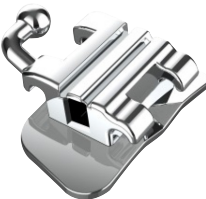
	Tooth	Torque	Offset	.018 slot	.022 slot
Maxillary	1 st Molars	-14°	10°	R18WTR-16,26	R22WTR-16,26

MBT .022

	Tooth	Torque	Offset	.022 slot
Maxillary	1 st Molars	-14°	10°	M22WTR-16,26

A1 BUCCAL TUBE

Bondable



Single #6



Single #7

ROTH .018 / .022

	Tooth	Torque	Offset	.018 slot	.022 slot
Maxillary	1 st Molars	-14°	10°	R18BS-16,26	R22BS-16,26
	2 nd Molars	-14°	10°	R18BS-17,27	R22BS-17,27
Mandibular	1 st Molars	-25°	4°	R18BS-36,46	R22BS-36,46
	2 nd Molars	-25°	4°	R18BS-37,47	R22BS-37,47

MBT .022

	Tooth	Torque	Offset	.022 slot
Mandibular	1 st Molars	-20°	0°	M22BS-36,46
	2 nd Molars	-20°	0°	M22BS-37,47

LP BUCCAL TUBE

Bondable



Single #6



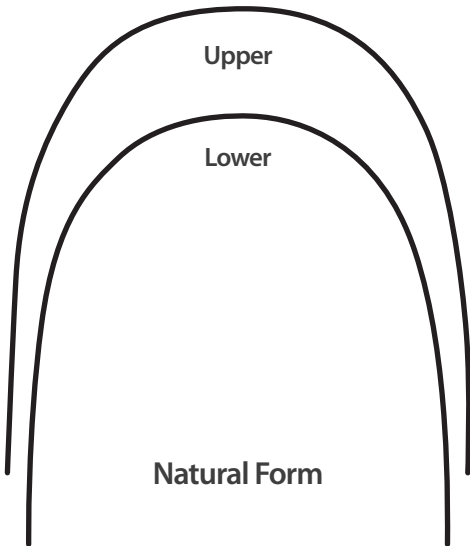
Single #7

ROTH .022

	Tooth	Torque	Offset	.022 slot
Maxillary	1 st Molars	-14°	10°	LP-R22BS-16,26
	2 nd Molars	-14°	10°	LP-R22BS-17,27
Mandibular	1 st Molars	-25°	4°	LP-R22BS-36,46
	2 nd Molars	-25°	4°	LP-R22BS-37,47

MBT .022

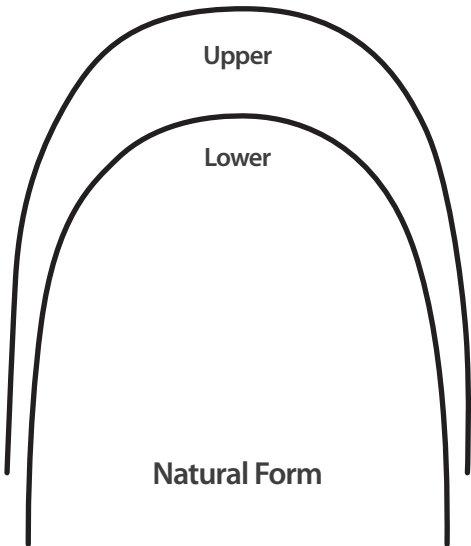
	Tooth	Torque	Offset	.022 slot
Maxillary	1 st Molars	-14°	10°	LP-M22BS-16,26
	2 nd Molars	-14°	10°	LP-M22BS-17,27
Mandibular	1 st Molars	-20°	0°	LP-M22BS-36,46
	2 nd Molars	-20°	0°	LP-M22BS-37,47



SMART NI-TI Super Elastic

- Super Elastic Wire for optimal resilience
- High-quality Ni-Ti Wire produced after numerous tests, including bending tests, tensile strength tests, and transformation temperature measurements
- Manufactured in the most commonly used "Natural Form" in orthodontics

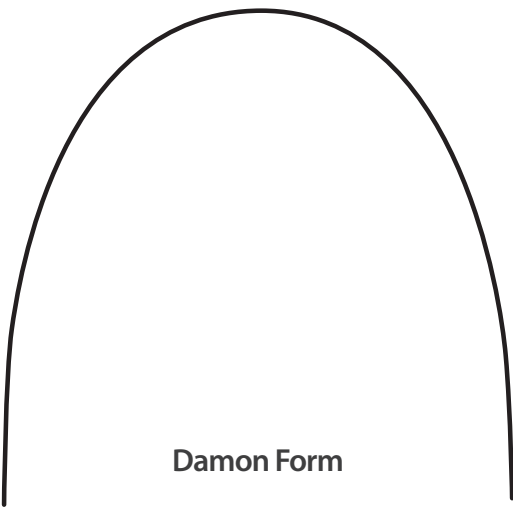
Size	Part Numbers	Size	Part Numbers
010	NT010U / NT010L	016X016	NT016016U / NT016016L
012	NT012U / NT012L	016X022	NT016022U / NT016022L
014	NT014U / NT014L	017X025	NT017025U / NT017025L
016	NT016U / NT016L	018X025	NT018025U / NT018025L
018	NT018U / NT018L	019X025	NT019025U / NT019025L
020	NT020U / NT020L	021X025	NT021025U / NT021025L



SMART COPPER NI-TI

- Wire Made from a Copper and Nickel Titanium Alloy
- Shape memory response occurs at 35°C, activating orthodontic forces
- Efficient tooth movement achieved with consistent force and smooth persistence

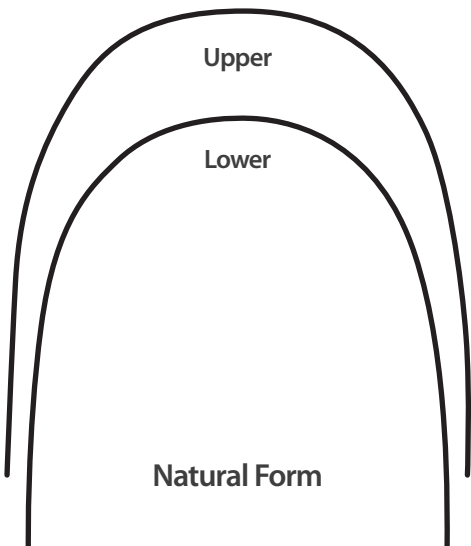
Size	Part Numbers	Size	Part Numbers
012	CNT012U / CNT012L	016X022	CNT016022U / CNT016022L
014	CNT014U / CNT014L	017X025	CNT017025U / CNT017025L
016	CNT016U / CNT016L	018X025	CNT018025U / CNT018025L
018	CNT018U / CNT018L	019X025	CNT019025U / CNT019025L



SMART DAMON COPPER NI-TI

- Perfect Archwire Sequence for Self-Ligating Brackets
- Wire made from a copper and nickel titanium alloy
- Shape memory response occurs at 35°C, activating orthodontic forces
- Efficient tooth movement achieved with consistent force and smooth persistence

Size	Part Numbers	Size	Part Numbers
013	NT013D	014X025	CNT014025D
014	NT014D	016X025	CNT016025D
016	NT016D	018X025	CNT018025D
018	NT018D		



SMART STAINLESS STEEL

- Minimized Friction with a Smooth Surface
- Provides precise torque control with accurate dimensions and shapes
- Utilizes the highest quality Stainless Steel for optimal quality and robust performance

Size	Part Numbers	Size	Part Numbers
014	SS014U / SS014L	016X022	SS016022U / SS016022L
016	SS016U / SS016L	017X025	SS017025U / SS017025L
018	SS018U / SS018L	018X025	SS018025U / SS018025L
020	SS020U / SS020L	019X025	SS019025U / SS019025L
		021X025	SS021025U / SS021025L

MULTI BUTTONS

Minor Tooth Movement



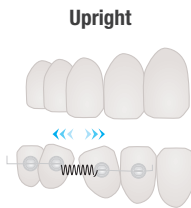
Circle Type

Belt Type

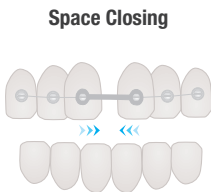


Circle Type EMB-C100
Belt Type EMB-B100
(20EA in 1 Package)

- ▶ **Easy Leveling** in the early stages of orthodontics
- ▶ **Optimized Hole Base** for resin buttons to maximize bonding strength
- ▶ **Slot in the Neck** of the button allows for **Wire** insertion (0.018 inch)
- ▶ Can also be used as a standard button



Upright



Space Closing



Leveling Alignment

ATTACHMENTS

Torquing Spring

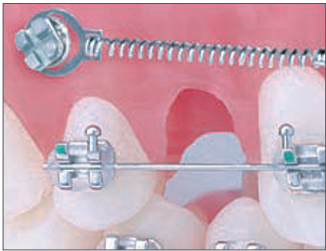


10 EA / 1 PKG

Central Gingival Anterior Central Occlusal

	Large	Medium	Small
016X022	500-17	500-16	500-15
019X025	500-20	500-19	500-18

Ni-Ti Closed Coil Spring



10 EA / 1 PKG

	Size	Force	
Ni-Ti Closed Coil Spring	6mm	Heavy Force	500-25
	9mm	Medium Force	500-24
	12mm	Light Force	500-23

ATTACHMENTS

Crimpable Hook

Ball Top 2.7mm
500-03
10EA/1PKG



Crimpable Hook

Ball Top 4mm
500-04
10EA/1PKG



Crimpable Hook

T Top 2.7mm
500-05
10EA/1PKG



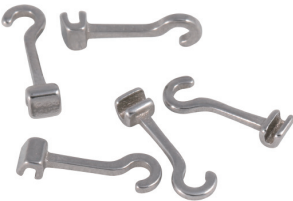
Crimpable Hook

T Top 4mm
500-06
10EA/1PKG



Crimpable Hook

7mm
500-08 [Left]
500-07 [Right]
10EA/1PKG



Crimpable Stop

500-01
10EA/1PKG



DBS Metal Button

500-12
10EA/1PKG



Weldable Button

500-11
10EA/1PKG



Button with Hook

500-9[Left]
500-10[Right]
10EA/1PKG



Lingual Ring

500-26
10EA/1PKG



Lingual Sheath

500-02
10EA/1PKG



ELASTIC

INTRAORAL

- ▶ **Proprietary Manufacturing Process** minimizes the use of talc
- ▶ WBT elastics are perfectly formed and precisely cut, ensuring consistent force levels
- ▶ Only **Premium Medical–Grade Latex** meets the standards for intraoral elastic manufacturing



	1/8{3.2mm}	3/16{4.8mm}	1/4{6.4mm}	5/16{7.9mm}	3/8{9.5mm}
3.5oz	<div><div>ELASTICS</div><div></div><div>-Apple-</div><div>Order No. 760-02 • Size 1/8" 3.5oz 100PCS/PKG</div><div>WORLD BIO TECH</div></div> <div>Apple 760-02</div>	<div><div>ELASTICS</div><div></div><div>-Cacao-</div><div>Order No. 770-02 • Size 3/16" 3.5oz 100PCS/PKG</div><div>WORLD BIO TECH</div></div> <div>Cacao 770-02</div>	<div><div>ELASTICS</div><div></div><div>-Lime-</div><div>Order No. 780-02 • Size 1/4" 3.5oz 100PCS/PKG</div><div>WORLD BIO TECH</div></div> <div>Lime 780-02</div>	<div><div>ELASTICS</div><div></div><div>-Melon-</div><div>Order No. 790-02 • Size 5/16" 3.5oz 100PCS/PKG</div><div>WORLD BIO TECH</div></div> <div>Melon 790-02</div>	<div><div>ELASTICS</div><div></div><div>-Plum-</div><div>Order No. 800-02 • Size 3/8" 3.5oz 100PCS/PKG</div><div>WORLD BIO TECH</div></div> <div>Plum 800-02</div>
4.5oz	<div><div>ELASTICS</div><div></div><div>-Avocado-</div><div>Order No. 760-03 • Size 1/8" 4.5oz 100PCS/PKG</div><div>WORLD BIO TECH</div></div> <div>Avocado 760-03</div>	<div><div>ELASTICS</div><div></div><div>-Cherry-</div><div>Order No. 770-03 • Size 3/16" 4.5oz 100PCS/PKG</div><div>WORLD BIO TECH</div></div> <div>Cherry 770-03</div>	<div><div>ELASTICS</div><div></div><div>-Lemon-</div><div>Order No. 780-03 • Size 1/4" 4.5oz 100PCS/PKG</div><div>WORLD BIO TECH</div></div> <div>Lemon 780-03</div>	<div><div>ELASTICS</div><div></div><div>-Mandarin-</div><div>Order No. 790-03 • Size 5/16" 4.5oz 100PCS/PKG</div><div>WORLD BIO TECH</div></div> <div>Mandarin 790-03</div>	<div><div>ELASTICS</div><div></div><div>-Papaya-</div><div>Order No. 800-03 • Size 3/8" 4.5oz 100PCS/PKG</div><div>WORLD BIO TECH</div></div> <div>Papaya 800-03</div>
6oz	<div><div>ELASTICS</div><div></div><div>-Applemango-</div><div>Order No. 760-04 • Size 3/8" 6oz 100PCS/PKG</div><div>WORLD BIO TECH</div></div> <div>Applemango 760-04</div>	<div><div>ELASTICS</div><div></div><div>-Coconut-</div><div>Order No. 770-04 • Size 3/16" 6oz 100PCS/PKG</div><div>WORLD BIO TECH</div></div> <div>Coconut 770-04</div>	<div><div>ELASTICS</div><div></div><div>-Litchi-</div><div>Order No. 780-04 • Size 1/4" 6oz 100PCS/PKG</div><div>WORLD BIO TECH</div></div> <div>Litchi 780-04</div>	<div><div>ELASTICS</div><div></div><div>-Mangosteen-</div><div>Order No. 790-04 • Size 5/16" 6oz 100PCS/PKG</div><div>WORLD BIO TECH</div></div> <div>Mangosteen 790-04</div>	<div><div>ELASTICS</div><div></div><div>-Pineapple-</div><div>Order No. 800-04 • Size 3/8" 6oz 100PCS/PKG</div><div>WORLD BIO TECH</div></div> <div>Pineapple 800-04</div>

ELASTOMERIC

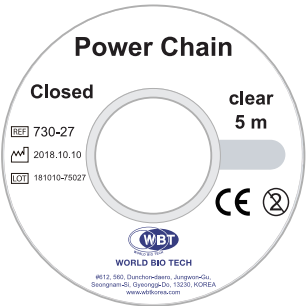
Control Chain



4m

Force / Color	Medium Clear	Light Clear	Medium Grey
Closed	910-01	900-01	930-01
Open	910-02		

Power Chain



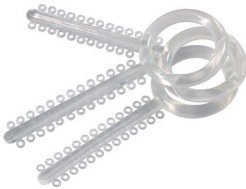
5m

Clear	
Closed	730-27
Short	740-27
Long	750-27

Silver-Grey	
Closed	730-06
Short	740-06
Long	750-06

Ligature O-Ring

Grey [700-06]
Clear [700-27]
1040 EA/PKG



Separation Ring

[810-01]
1050 EA/PKG



Elastic Tubing



Clear 027 Inch 3m
[600-32]

Elastic Thread



025 Inch 7.6m [600-30]
030 Inch 7.6m [600-31]



- ▶ Easy Size Identification with Laser Marking
- ▶ Locking Tapered Type allows for Easy Attachment and Removal with the Handpiece
- ▶ Perforations at Regular Intervals on the Blade Reduce Breakage and Ensure Smooth Debris Removal during Stripping
- ▶ The Robust Connection between the Blade and Body Extends Usage Without Breakage

Double Sided

- 15 Micron 15HD
- 25 Micron 25HD
- 40 Micron 40HD
- 60 Micron 60HD
- 90 Micron 90HD



Single Sided

- 15 Micron Right & Left 15HR/HL
- 25 Micron Right & Left 25HR/HL
- 40 Micron Right & Left 40HR/HL
- 60 Micron Right & Left 60HR/HL
- 90 Micron Right & Left 90HR/HL



IPR Strip for Clear Aligning

- 0.1mm T0.1
- 0.2mm T0.2
- 0.3mm T0.3
- 0.4mm T0.4



For Polishing

- 8 Micron 8HD



Saw Type For Starter



Space Gauge

P-152

- 0.10mm
- 0.15mm
- 0.20mm
- 0.25mm
- 0.30mm
- 0.40mm
- 0.50mm



Manual Handle

For Hand Stripping
Straight & Angled

P-153





MFU Type



Diameter	Length	Part Numbers
1.4mm	6mm	MFU14-06
	8mm	MFU14-08
	10mm	MFU14-10
	12mm	MFU14-12
	14mm	MFU14-14
1.6mm	6mm	MFU16-06
	8mm	MFU16-08
	10mm	MFU16-10
	12mm	MFU16-12
	14mm	MFU16-14
1.8mm	6mm	MFU18-06
	8mm	MFU18-08
	10mm	MFU18-10
	12mm	MFU18-12
	14mm	MFU18-14
2.0mm	6mm	MFU20-06
	8mm	MFU20-08
	10mm	MFU20-10
	12mm	MFU20-12
	14mm	MFU20-14

MFW Type



Diameter	Length	Part Numbers
1.4mm	6mm	MFW14-06
	8mm	MFW14-08
	10mm	MFW14-10
	12mm	MFW14-12
	14mm	MFW14-14
1.6mm	6mm	MFW16-06
	8mm	MFW16-08
	10mm	MFW16-10
	12mm	MFW16-12
	14mm	MFW16-14
1.8mm	6mm	MFW18-06
	8mm	MFW18-08
	10mm	MFW18-10
	12mm	MFW18-12
	14mm	MFW18-14
2.0mm	6mm	MFW20-06
	8mm	MFW20-08
	10mm	MFW20-10
	12mm	MFW20-12
	14mm	MFW20-14

- ▶ Hexagon Head Type
- ▶ Supports wire insertion to 020
- ▶ Cutting Edge Reduces Load on the Screw during Insertion
- ▶ Self-Drilling and Self-Tapping thread structure for Easy Insertion and Excellent Initial Stability
- ▶ Easy to ligate Chains, O-rings, and Elastics

