



WORLD BIO TECH

The Medical Partner for a Better Future!!



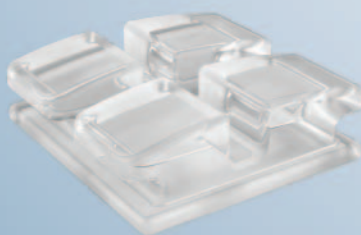
Better than



Our first priority is customer satisfaction
Always try to develop advanced technology and good products
Meet WORLD BIO TECH that improves the quality of your life



MACH



BIJOU



BRIGHT - I



BRIGHT - II

CONTENTS



MACH
⋮
01.02

BIJOU
⋮
03.04

BRIGHT - I
⋮
05.06

BRIGHT - II
⋮
07.08

MULTI
BUTTON
⋮
09.10

INVARIABLE
⋮
11

O-RING
⋮
12



MULTI
BUTTON



INVARIABLE



O-RING

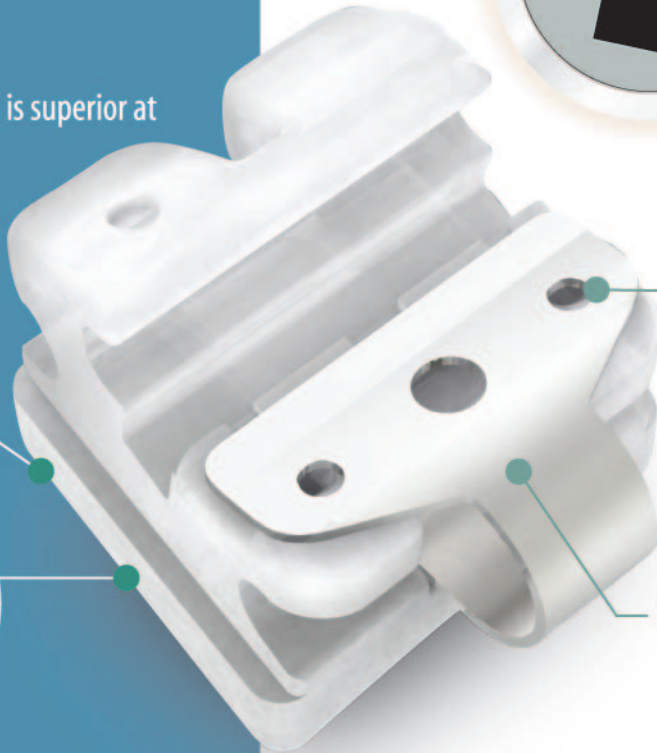
MACH

Self Ligation Ceramic Bracket

The Optimum Base which is superior at Bonding / Debonding



The Patented Round Ball Contact design makes Low Friction
International Patent PCT Applied



Tooth Colored Clips Coated with Rhodium

About MACH

- By applying the RBC(Round Ball Contact) engineering method on the specialized Clip for the first time in the world was able to minimize contact with the wire, which in turn produces the best sliding effect.
- By strengthening durability, remarkably was improved Ceramic's fracture.
- Optimal bonding strength and easily Debonding.
- The Height, lowered by a Low Profile, reduced foreign body sensation.
- Emphasized patient's overall comfort via Body Rounding.
- Translucent material use enabled the Bracket's superb Aesthetics.



■ ROTH

	Tooth	Torque	Ang	M/D Width	Part No. (022 Slot)	
Maxillary	Central	12°	5°	3.5mm	ESB-R22-11	ESB-R22-21
	Lateral	8°	9°	3.0mm	ESB-R22-12	ESB-R22-22
	Cuspid with Hook	-2°	11°	3.5mm	ESB-R22-13H	ESB-R22-23H
	1st Bicupid with Hook	-7°	0°	3.2mm	ESB-R22-14H	ESB-R22-24H
	2nd Bicupid with Hook	-7°	0°	3.2mm	ESB-R22-15H	ESB-R22-25H
Mandibular	Anterior	-1°	0°	2.5mm	ESB-R22-31	ESB-R22-41
	Cuspid with Hook	-11°	7°	3.5mm	ESB-R22-33H	ESB-R22-43H
	1st Bicupid with Hook	-17°	0°	3.2mm	ESB-R22-34H	ESB-R22-44H
	2nd Bicupid with Hook	-22°	0°	3.2mm	ESB-R22-35H	ESB-R22-45H

■ MBT

	Tooth	Torque	Ang	M/D Width	Part No. (022 Slot)	
Maxillary	Central	17°	4°	3.5mm	ESB-M22-11	ESB-M22-21
	Lateral	10°	8°	3.0mm	ESB-M22-12	ESB-M22-22
	Cuspid with Hook	0°	8°	3.5mm	ESB-M22-13H	ESB-M22-23H
	1st Bicupid with Hook	-7°	0°	3.2mm	ESB-M22-14H	ESB-M22-24H
	2nd Bicupid with Hook	-7°	0°	3.2mm	ESB-M22-15H	ESB-M22-25H
Mandibular	Anterior	-6°	0°	2.5mm	ESB-M22-31	ESB-M22-41
	Cuspid with Hook	0°	3°	3.5mm	ESB-M22-33H	ESB-M22-43H
	1st Bicupid with Hook	-12°	2°	3.2mm	ESB-M22-34H	ESB-M22-44H
	2nd Bicupid with Hook	-17°	2°	3.2mm	ESB-M22-35H	ESB-M22-45H

■ FULL SETS

Packages	ROTH.022	ROTH.018	MBT.022
Upper/Lower 3-3	ESB-R22-300	ESB-R18-300	ESB-M22-300
Upper/Lower 5-5	ESB-R22-500	ESB-R18-500	ESB-M22-500

■ WBT Marking system



BIJOU

Mono crystalline Sapphire
ceramic bracket



Half Base Coating

Plasma Silica Coating on Slot and Full Body

The world's first monocrystalline Bracket
that applies 2 steps Groove

About BIJOU

The Most Perfect Mono crystalline sapphire
ceramic brackets

- Easy and accurate bracket positioning
-The world's first monocrystalline Bracket that
applies 2 steps Groove (Patent applied for)
- Less Irritation
-Ultra Smooth and Rounded Edge Bracket
- Low Profile
- Plasma silica coating on Slot and Full Body
-Superior Sliding & Minimize Fracture.
- Half Base Coating
-Superior retention and easy debonding
characteristics.



■ ROTH

	Tooth	Torque	Ang	Part No.	
				Roth.018	Roth.022
Maxillary	Central	12°	5°	BJB-R18-11 BJB-R18-21	BJB-R22-11 BJB-R22-21
	Lateral	8°	9°	BJB-R18-12 BJB-R18-22	BJB-R22-12 BJB-R22-22
	Cuspid with Hook	-2°	11°	BJB-R18-13H BJB-R18-23H	BJB-R22-23H BJB-R22-33H
	1st Bicuspid with Hook	-7°	0°	BJB-R18-14H BJB-R18-24H	BJB-R22-14H BJB-R22-24H
	2nd Bicuspid with Hook	-7°	0°	BJB-R18-15H BJB-R18-25H	BJB-R22-15H BJB-R22-25H
Mandibular	Anterior	-1°	0°	BJB-R18-31 BJB-R18-41	BJB-R22-31 BJB-R22-41
	Cuspid with Hook	-11°	7°	BJB-R18-33H BJB-R18-43H	BJB-R22-33H BJB-R22-43H
	1st Bicuspid with Hook	-17°	0°	BJB-R18-34H BJB-R18-44H	BJB-R22-34H BJB-R22-44H
	2nd Bicuspid with Hook	-22°	0°	BJB-R18-35H BJB-R18-45H	BJB-R22-35H BJB-R22-45H

■ MBT

	Tooth	Torque	Ang	Part No.	
				MBT.018	MBT.022
Maxillary	Central	17°	4°	BJB-M18-11 BJB-M18-21	BJB-M22-11 BJB-M22-21
	Lateral	10°	8°	BJB-M18-12 BJB-M18-22	BJB-M22-12 BJB-M22-22
	Cuspid with Hook	0°	8°	BJB-M18-13H BJB-M18-23H	BJB-M22-23H BJB-M22-33H
	1st Bicuspid with Hook	-7°	0°	BJB-M18-14H BJB-M18-24H	BJB-M22-14H BJB-M22-24H
	2nd Bicuspid with Hook	-7°	0°	BJB-M18-15H BJB-M18-25H	BJB-M22-15H BJB-M22-25H
Mandibular	Anterior	-6°	0°	BJB-M18-31 BJB-M18-41	BJB-M22-31 BJB-M22-41
	Cuspid with Hook	-0°	3°	BJB-M18-33H BJB-M18-43H	BJB-M22-33H BJB-M22-43H
	1st Bicuspid with Hook	-12°	2°	BJB-M18-34H BJB-M18-44H	BJB-M22-34H BJB-M22-44H
	2nd Bicuspid with Hook	-17°	2°	BJB-M18-35H BJB-M18-45H	BJB-M22-35H BJB-M22-45H

■ FULL SETS

Packages	ROTH.018	ROTH.022	MBT.018	MBT.022
Upper/Lower 3-3	BJB-R18-300	BJB-R22-300	BJB-M18-300	BJB-M22-300
Upper/Lower 5-5	BJB-R18-500	BJB-R22-500	BJB-M18-500	BJB-M22-500

BRIGHT - I

Ceramic Bracket



TOP VIEW



SIDE VIEW



BACK SIDE VIEW



About BRIGHT - I

- Smooth round surface for enhanced patient comfort.
- Excellent translucent for pleasing aesthetics.
- Perfectly mechanical Lock base brackets are proven to be easily removed without enamel fracture or damage.



■ ROTH

	Tooth	Torque	Ang
Maxillary	Central	12°	5°
	Lateral	8°	9°
	Cuspid with Hook	-2°	13°
	1st Bicupid with Hook	-7°	0°
	2nd Bicupid with Hook	-7°	0°
Mandibular	Anterior	-1°	0°
	Cuspid with Hook	-11°	7°
	1st Bicupid with Hook	-17°	0°
	2nd Bicupid with Hook	-22°	0°

■ MBT

	Tooth	Torque	Ang
Maxillary	Central	17°	4°
	Lateral	10°	8°
	Cuspid with Hook	0°	8°
	1st Bicupid with Hook	-7°	0°
	2nd Bicupid with Hook	-7°	0°
Mandibular	Anterior	-6°	0°
	Cuspid with Hook	0°	3°
	1st Bicupid with Hook	-12°	2°
	2nd Bicupid with Hook	-17°	2°

■ FULL SETS

Packages	ROTH.022	ROTH.018	MBT.022
Upper/Lower 3-3	B1-R22-300	B1-R18-300	B1-M22-300
Upper/Lower 5-5	B1-R22-500	B1-R18-500	B1-M22-500

BRIGHT - II

Metal Slot Ceramic Bracket



TOP VIEW



SIDE VIEW



BACK SIDE VIEW



About BRIGHT - II

- The metal slot brackets significantly reduces friction during sliding mechanics.
- Made from clear polycrystalline alumina for a bracket system with the highest transparency available for ultimate in patient aesthetics & acceptance.
- The mechanical lock base brackets offers superior bonding and easy debonding.



■ ROTH

	Tooth	Torque	Ang
Maxillary	Central	12°	5°
	Lateral	8°	9°
	Cuspid with Hook	-2°	13°
	1st Bicupid with Hook	-7°	0°
	2nd Bicupid with Hook	-7°	0°
Mandibular	Anterior	-1°	0°
	Cuspid with Hook	-11°	7°
	1st Bicupid with Hook	-17°	0°
	2nd Bicupid with Hook	-22°	0°

■ MBT

	Tooth	Torque	Ang
Maxillary	Central	17°	4°
	Lateral	10°	8°
	Cuspid with Hook	0°	8°
	1st Bicupid with Hook	-7°	0°
	2nd Bicupid with Hook	-7°	0°
Mandibular	Anterior	-6°	0°
	Cuspid with Hook	0°	3°
	1st Bicupid with Hook	-12°	2°
	2nd Bicupid with Hook	-17°	2°

■ FULL SETS

Packages	ROTH.022	ROTH.018
Upper/Lower 3-3	B2-R22-300	B2-R18-300
Upper/Lower 5-5	B2-R22-500	B2-R18-500

MULTI BUTTON

Button Revolution



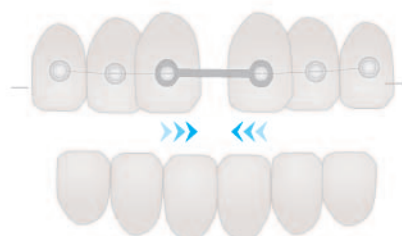
About MULTI BUTTON

Patented product created by
WBT Technology.

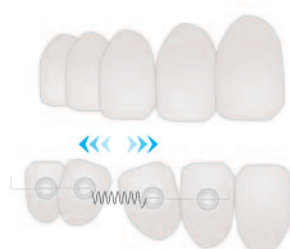
- The patented Base created a central Groove and numerous Holes, which maximized Bonding force.
- Created a Hole in the patented Neck area, where wires 012~018 can be inserted.
- Considering the surgeon's convenience developed and applied the Edge Head, which made easily catching via pliers during surgeries.



■ MTM (Miuns Teeth Movement)



Space Closing



Upright



Leveling Alignment



■ MULTI BUTTON

Packages	Circle Type	Belt Type
Part No.	EMB-C100	EMB-B100

INVARIABLE

Rhodium Coated Archwire



About INVARIABLE

- The specially Rhodium laminated Invariable coated archwire has no worries about the bristle peeling anything off or the pigmentation by food during the period of treatment and is therefore superior in terms of Aesthetic beauty.
- Minimized the change of Wire size after lamination.
- Effectively reduced the friction coefficient of the surface and thus improved sliding.
- The coating is maintained for a long time.

INVARIABLE

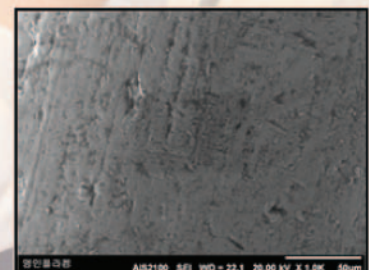
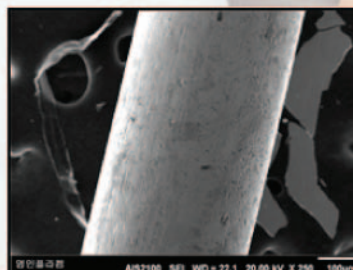
Ni-Ti Coated Archwire

SIZE	UPPER	LOWER
.012	ECAWN-0.012U	ECAWN-0.012L
.014	ECAWN-0.014U	ECAWN-0.014L
.016	ECAWN-0.016U	ECAWN-0.016L
.018	ECAWN-0.018U	ECAWN-0.018L
.020	ECAWN-0.020U	ECAWN-0.020L
.016×.022	ECAWN-0.016×0.022U	ECAWN-0.016×0.022L
.017×.025	ECAWN-0.017×0.025U	ECAWN-0.017×0.022L
.018×.025	ECAWN-0.018×0.025U	ECAWN-0.018×0.025L
.019×.025	ECAWN-0.019×0.025U	ECAWN-0.019×0.025L
.021×.025	ECAWN-0.021×0.025U	ECAWN-0.021×0.025L

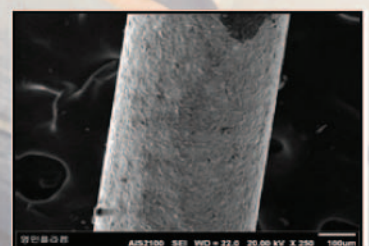
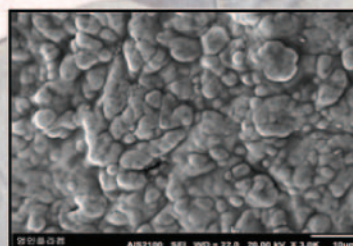
S-S Coated Archwire

SIZE	UPPER	LOWER
.012	-	-
.014	ECAWS-0.014U	ECAWS-0.014L
.016	ECAWS-0.016U	ECAWS-0.016L
.018	ECAWS-0.018U	ECAWS-0.018L
.020	ECAWS-0.020U	ECAWS-0.020L
.016×.022	ECAWS-0.016×0.022U	ECAWS-0.016×0.022L
.017×.025	ECAWS-0.017×0.025U	ECAWS-0.017×0.022L
.018×.025	ECAWS-0.018×0.025U	ECAWS-0.018×0.025L
.019×.025	ECAWS-0.019×0.025U	ECAWS-0.019×0.025L
.021×.025	ECAWS-0.021×0.025U	ECAWS-0.021×0.025L

INSIDE



OUTSIDE



O-RING

Heart Shape Ring



■ O-RING

Part No.

EOR-H100

About O-RING

- Unlike other products, it has a heart-shaped ring that rotates 90 degrees, which make it easier for the doctors to apply.
- The product is an ideal Slim Type and is Easy to ligate on the wing.
- Minimum bleaching by saliva or food allows superior Aesthetics.
- Increased the elastic force, retentivity is superior while the ligation.





WORLD BIO TECH

#302 Biz Center, SKn Technopark, 124 Sagimakgol-Ro, Jungwon-Gu, Seongnam,
Gyeonggi-Do, 462-721, KOREA

T. +82.31.776.2804 F. +82.31.776.2805 W. www.wbtkorea.com E. sales@wbtkorea.com

The Medical Partner for a Better Future!!